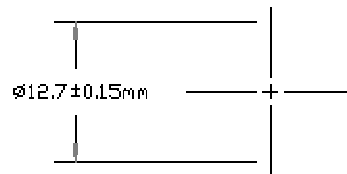
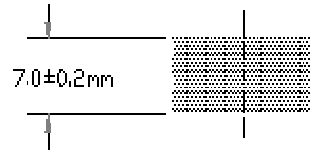


SPECIFICATIONS J & H FILTERS



FILTER NAME	PART NUMBER	CENTER WAVELENGTH	BANDWIDTH FWHM	TRANSMISSION MINIMUM
J	4139	$1.250 \pm 0.042 \mu\text{m}$	$0.160 \pm 0.032 \mu\text{m}$	60%
H	4140	$1.650 \pm 0.045 \mu\text{m}$	$0.300 \pm 0.060 \mu\text{m}$	60%

GENERAL SPECIFICATIONS

DIAMETER	$\text{Ø}12.7 \pm 0.15 \text{ mm}$
TOTAL THICKNESS	$7.0 \pm 0.2 \text{ mm}$
EDGE	SEALED WITH METAL RING OR RUBBER COATING
SURFACE QUALITY	60-40 SCRATCH-DIG
FLATNESS	5 WAVES WITHIN CLEAR APERTURE
WEDGE	NOT TO EXCEED 0.05mm
CHAMFER	SLIGHT PROTECTIVE CHAMFER
CEMENTING QUALITY	BUBBLES & STRIATIONS SHOULD NOT BE VISIBLE TO THE UNAIDED EYE WITHIN CLEAR APERTURE
BLOCKING	LESS THAN 0.001 FROM 0.70 to 2.1 μm OUTSIDE OF PASSBAND
CLEAR APERTURE	10.0 mm MINIMUM
COATING SPECS.	FILTER COATING IN ACCORDANCE WITH MIL-C-48497A
SUBSTRATE SPECS.	SUBSTRATE IN ACCORDANCE WITH MIL-D-13830A

TOLERANCE .XX ± .XXX ±	CONTRACT FILTERS	<i>OPTEC, Inc.</i>	
MATERIAL	REVISION 9/21/2001 3/1/2002 3/15/2001		
FINISH		SCALE: 2X	NO: 17-04016