

# Pyxis Commander

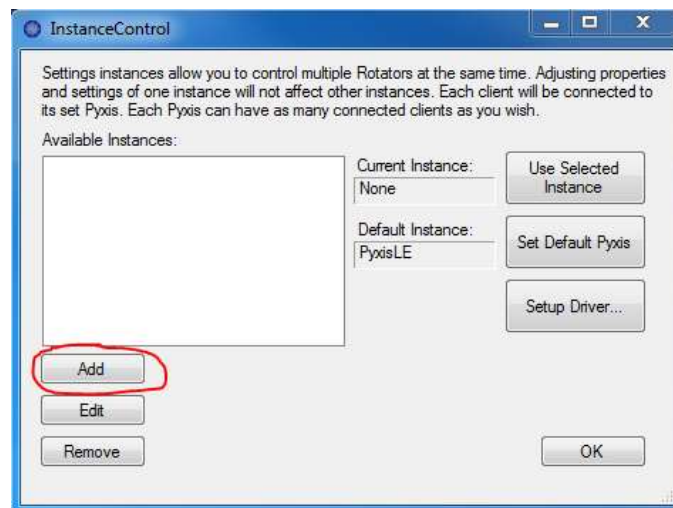
## Quick Setup Guide

Thanks for installing Pyxis Commander, Optec's control program and ASCOM driver for the Pyxis 2, Pyxis 3 and Pyxis LE rotators. Unlike our past drivers this driver allows you to control multiple Pyxis Rotators at the same time, even if they are different models. This is a short guide to help you get started. This guide assumes that you have already installed the current version of the Pyxis Commander Software.

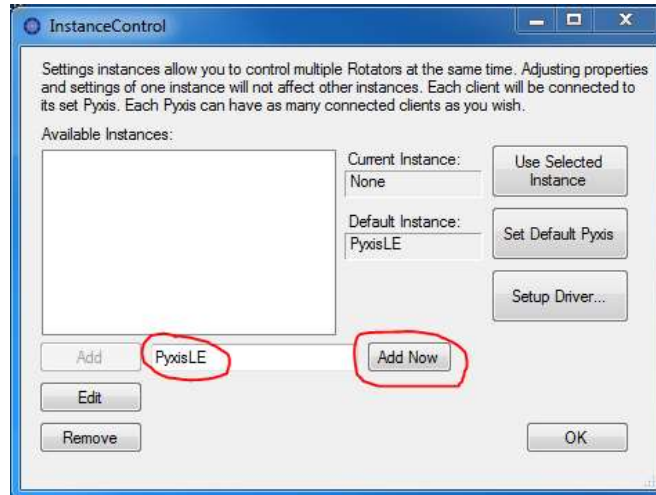
To begin start the Pyxis Commander Software. Before we can connect we will need to setup the rotator. Select "Setup" from the device menu.



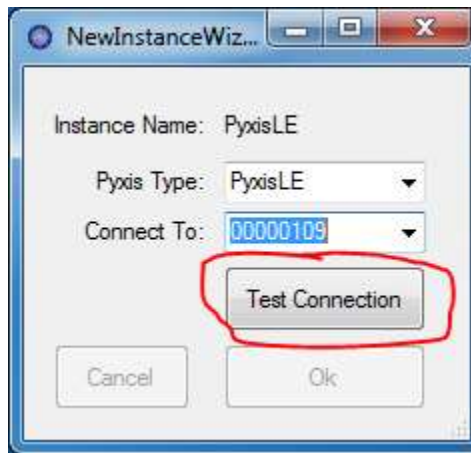
You should see this window:



There are no Pyxis Instances, so we need to add one before we can connect. Click Add, give the instance a name and then click Add Now.



From the window that opens select your Pyxis Type, the unit number (Pyxis LE) or COM Port (Pyxis 2 and 3). Then make sure that the cables are connected, and that the Pyxis is powered up and is not homing. Press test connection. Once the software is able to connect to your Pyxis you can press OK.



Back at the Instance Control form you can Setup the device specific settings by selecting the instance and clicking Setup Driver. For the Pyxis 2 and 3 you will need to connect in the setup dialog in order to change settings. Once you are done press ok to return to the main screen.

You should be all set. Each program will connect to the default Pyxis or you can manually create additional instances if you have more than one Pyxis. Once a client program has been set to Use Selected Pyxis it will always connect to that instance until you change the targeted instance.

If you have any questions or issues please contact us through the user group or via email at [support@optecinc.com](mailto:support@optecinc.com)