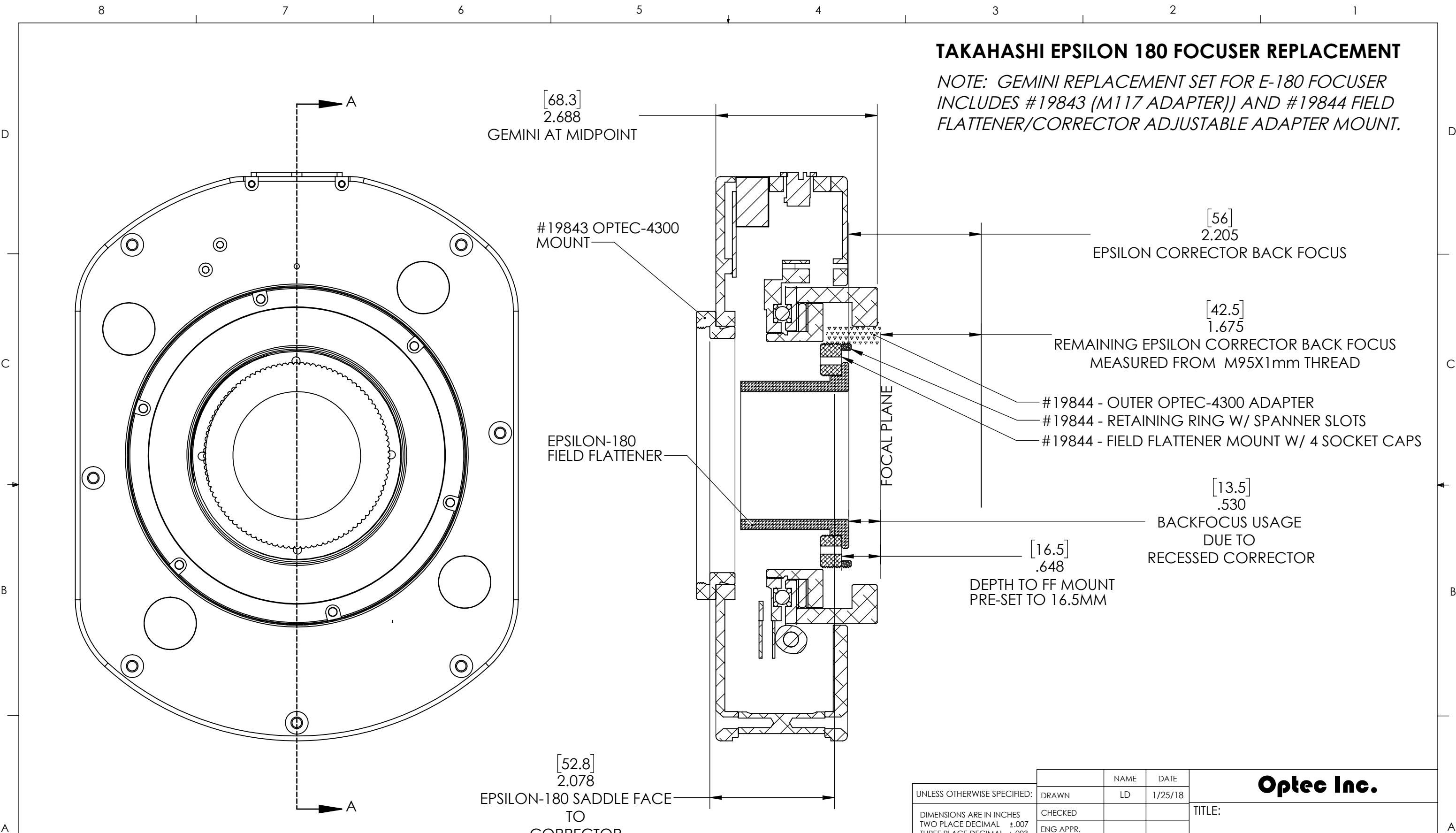


# TAKAHASHI EPSILON 180 FOCUSER REPLACEMENT

NOTE: GEMINI REPLACEMENT SET FOR E-180 FOCUSER INCLUDES #19843 (M117 ADAPTER)) AND #19844 FIELD FLATTENER/CORRECTOR ADJUSTABLE ADAPTER MOUNT.



[68.3]  
2.688  
GEMINI AT MIDPOINT

#19843 OPTEC-4300 MOUNT

EPSILON-180 FIELD FLATTENER

[52.8]  
2.078  
EPSILON-180 SADDLE FACE TO CORRECTOR

[56]  
2.205  
EPSILON CORRECTOR BACK FOCUS

[42.5]  
1.675  
REMAINING EPSILON CORRECTOR BACK FOCUS MEASURED FROM M95X1mm THREAD

#19844 - OUTER OPTEC-4300 ADAPTER  
#19844 - RETAINING RING W/ SPANNER SLOTS  
#19844 - FIELD FLATTENER MOUNT W/ 4 SOCKET CAPS

[13.5]  
.530  
BACKFOCUS USAGE DUE TO RECESSED CORRECTOR

[16.5]  
.648  
DEPTH TO FF MOUNT PRE-SET TO 16.5MM

FOCAL PLANE

NOTE: EPSILON 180 CORRECTOR IS RECESSED INSIDE DRAWTUBE IN ORDER TO MATCH THE STOCK FOCUSERS OPTICAL SPACING TO THE PRIMARY

UNLESS OTHERWISE SPECIFIED: DIMENSIONS ARE IN INCHES TWO PLACE DECIMAL ±.007 THREE PLACE DECIMAL ±.003	DRAWN	NAME	DATE	<b>Optec Inc.</b>
	CHECKED	LD	1/25/18	
	ENG APPR.			
	MFG APPR.			
	Q.A.			
MATERIAL	CONTRACT			TITLE: GEMINI WITH EPSILON 180
N/A	GEMINI			
FINISH	GEMINI			SIZE DWG. NO.
N/A				<b>B</b>
DO NOT SCALE DRAWING				SCALE: 2:3 WEIGHT: SHEET 1 OF 1

