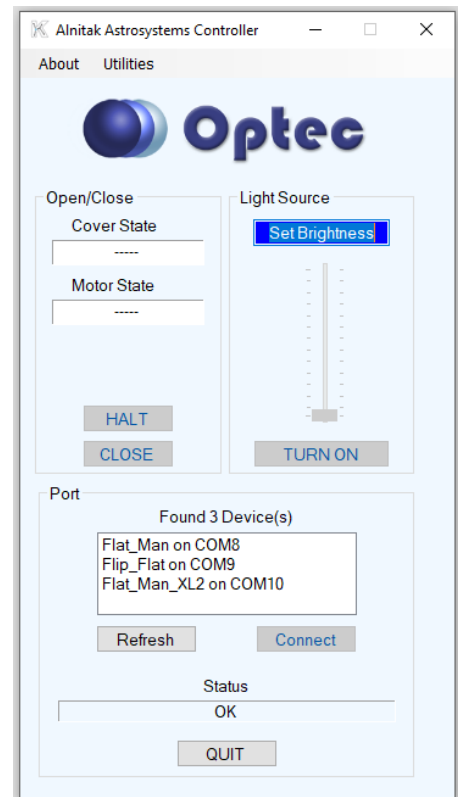




Alnitak Astrosystems Quick Start Guide.

Thank you for purchasing an Alnitak Astrosystems flat-field device from Optec. Visit <https://optecinc.com/astronomy/downloads/alnitak.htm> to get the latest Windows installer package. Download the latest **OptecAASetup zip file** from the Optec website.

1. Install the Alnitak Astrosystems software on your computer. This will also install the Manual (PDF) which addresses most installation questions.
2. Plug your flat-field device into a USB port or USB powered hub. Optec recommends using only the high quality USB cable provided with the device and only **powered** USB hubs when needed.
3. Windows 10 includes drivers for the embedded FTDI device. However, if you get a prompt for a USB device driver, allow Windows to search for a driver or download the driver directly from <https://www.ftdichip.com/FTDrivers.htm>.
4. Once the driver install is finished, launch the Alnitak Astrosystems Controller (either from the desktop icon or the start menu).
5. Click **Refresh** to see a list of your connected Alnitak Astrosystems devices. Select the one you want to connect to and then click Connect.
6. If you have a Flip-Flat, click Close first before turning on the light.
7. You are now ready to use your Alnitak Astrosystems flat-field device.
8. If you are having a problem not addressed by the manual contact Optec for assistance.



199 Smith Street · Lowell, Michigan 49331 · U.S.A.
Telephone: 616-897-9351 · Fax: (616) 897-8229 · Toll Free: 888-488-0381
sales@optecinc.com · <http://www.optecinc.com> · www.optecinc.us