

# Optec

Order Direct: [optecinc.us](http://optecinc.us)  
[sale@optecinc.com](mailto:sale@optecinc.com)  
616-897-9351

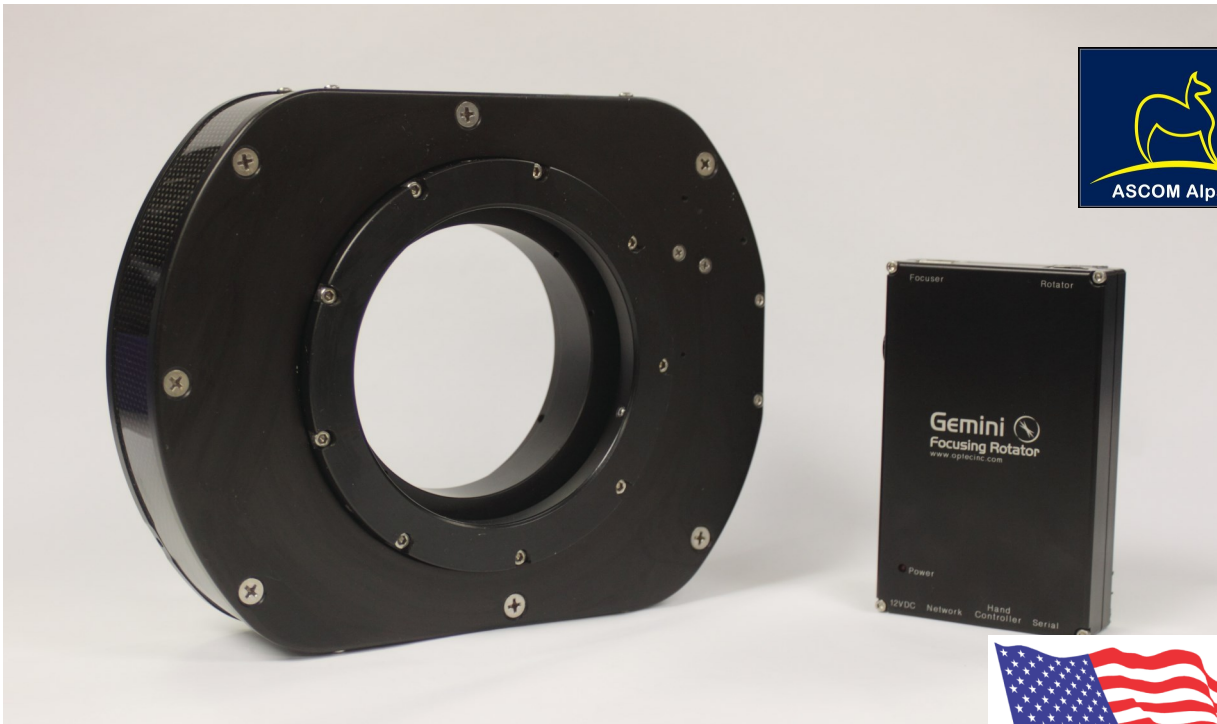


## Gemini Focusing Rotator

### Focus and Rotation in a Single Robust Device

Optec engineers have developed a completely new concept for combining telescope focus and camera rotation functions into a single robust, yet compact package. Rather than simply adding a rotator onto the end of a focuser drawtube, **Gemini** was designed from inception with a rotating drawtube providing superior strength and rigidity for heavy camera payloads. Featuring four lead-screws and four linear bearings, **Gemini** can easily handle 10-kg. (22-lbs.) payload packages without flexure. Full 360-degree rotation is a built-in function of the **Gemini** with a full 1/2" of linear travel. At the center of travel, **Gemini** measures a mere 2.45" in thickness

**3.75" (96mm) or 4.72" (120mm) Clear Aperture, 0.5" Focus Travel, only 2.45" thick**



Part Number 19750- Order Direct: [optecinc.us](http://optecinc.us)  
Phone: 616-897-9351  
Email: [sales@optecinc.com](mailto:sales@optecinc.com)

AMERICAN MADE