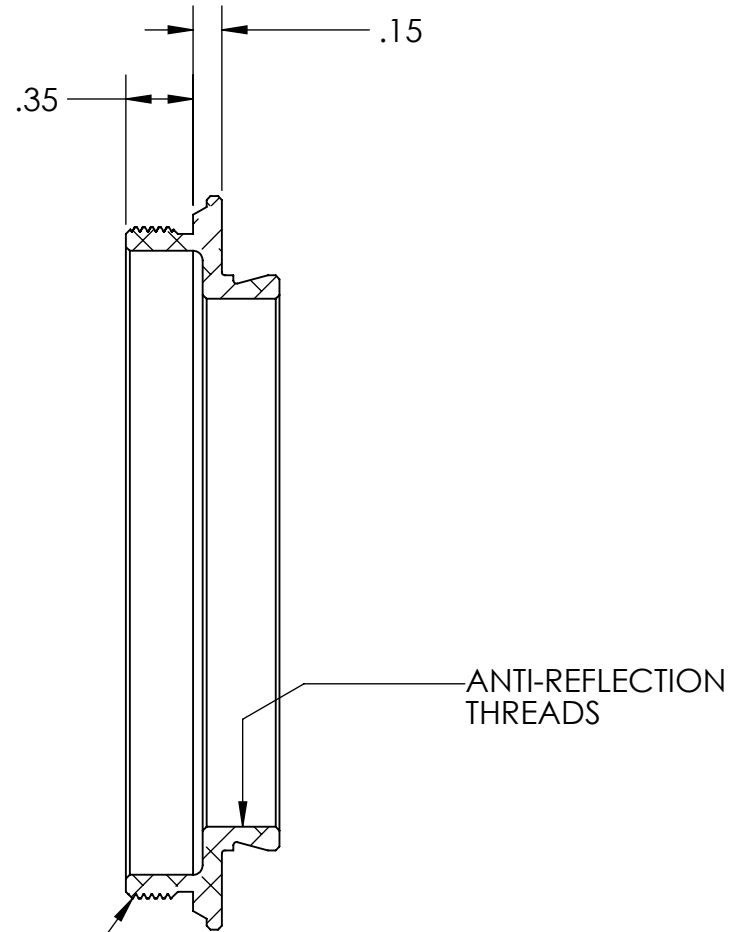
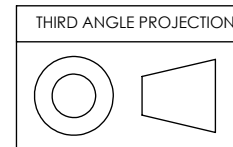
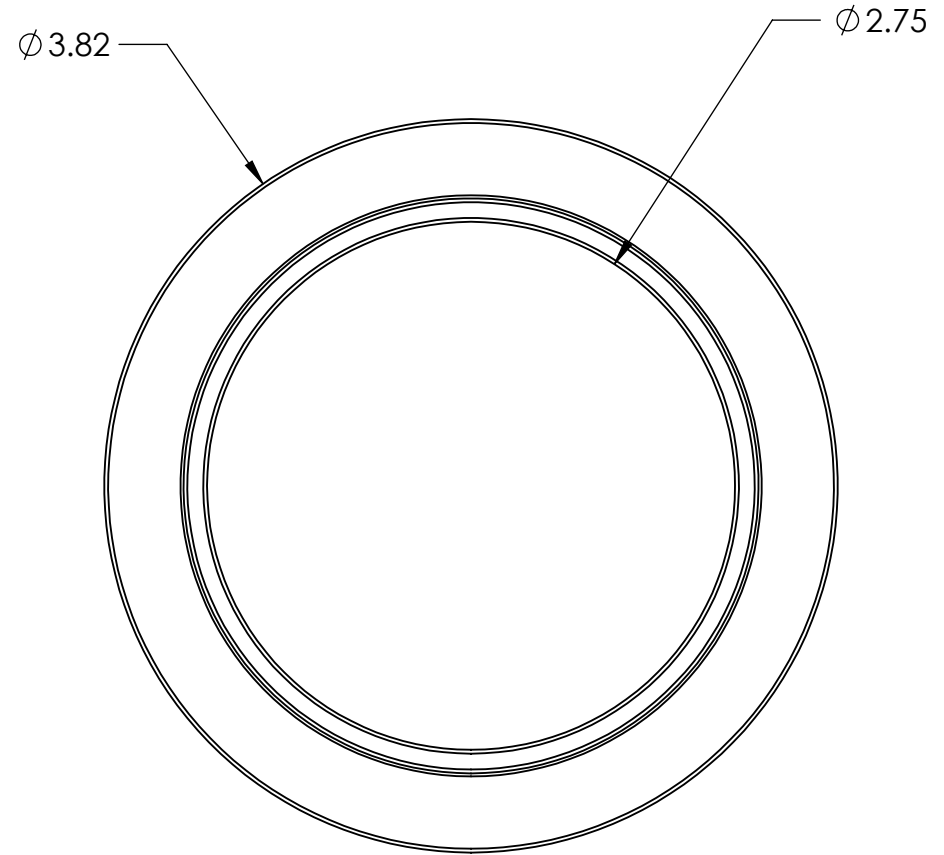


PN 6062
 STK. NO. 19921



DSI 3.500 - 24 UNS-2A



UNLESS OTHERWISE SPECIFIED: DIMENSIONS ARE IN INCHES TWO PLACE DECIMAL ±.007 THREE PLACE DECIMAL ±.003	DRAWN	NAME	DATE	Optec Inc.
	CHECKED	LD	7/17/19	
	ENG APPR.			
	MFG APPR.			
MATERIAL	CONTRACT			TITLE: DSI 3.500-24 TO OPTEC-3000S
6061-T6	DSI			
FINISH	SEE NOTES			SIZE
DO NOT SCALE DRAWING				DWG. NO. B 19-06820
				SCALE: 1:1
				WEIGHT:
				SHEET 1 OF 1