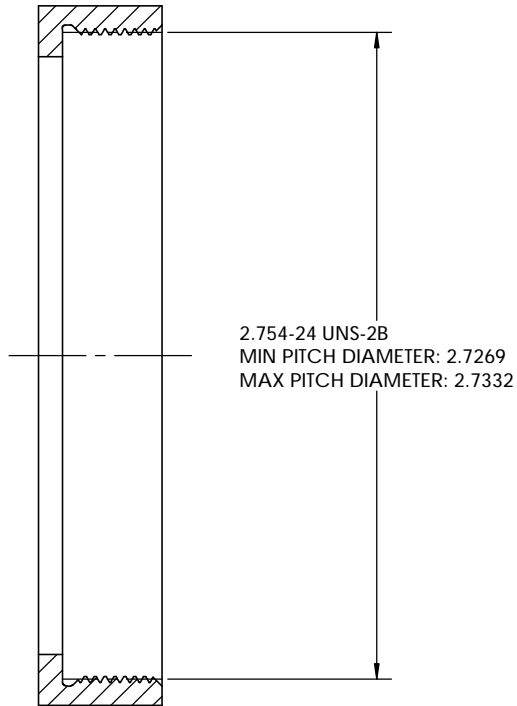


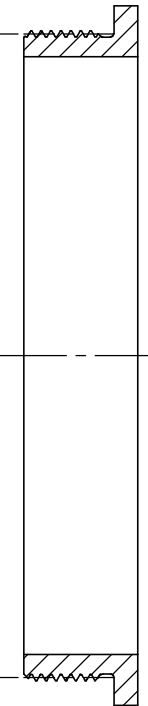
FROM ASTRO-PHYSICS NOTES:

1. REMOVE BURRS AND ALL SHARP EDGES
2. PITCH DIAMETERS ARE #1 CRITERIA AS MAJOR AND MINORS CAN VARY WITH INSERT GEOMETRY
3. THREAD CLEARANCE IS INTENTIONALLY RAN IN EXCESS TO ACCOMMODATE OLDER VERSIONS OF ACCESSORIES. IF A TIGHTER THREAD IS PREFERRED FOR YOUR APPLICATION THEN ADJUST FEMALE THREAD ACCORDINGLY

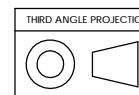
REVISIONS				
ZONE	REV.	DESCRIPTION	DATE	APPROVED
	A	INITIAL RELEASE	6/16/10	LD
	B	UPDATED TO MATCH AP SPECS	8/14/2012	LD



2.740-24 UNS-3A  
 MAX PITCH DIAMETER: 2.7129  
 MIN PITCH DIAMETER: 2.7093  
 MAX MOW: 2.7638 (0.029 WIRES)  
 MIN MOW: 2.7602 (0.029 WIRES)



NOTE: REFERENCED FROM ASTRO-PHYSICS DRAWING: AP2.74-24 (dtd. 7/10/08)



UNLESS OTHERWISE SPECIFIED: DRAWN CHECKED ENG APPR. MFG APPR. G.A.	NAME	DATE	<b>Optec Inc.</b>  TITLE: <b>ASTRO-PHYSICS 2.740-24</b>
	LD	08/14/12	
MATERIAL: N/A	CONTRACT		SIZE DWG. NO. <b>B 19-06760</b>
FINISH SEE NOTES	AP 2.74-24		
DO NOT SCALE DRAWING			SCALE: 2:1 WEIGHT: SHEET 1 OF 1